

CHRISTIE'S

PRESS RELEASE | FOR IMMEDIATE RELEASE: APRIL 30 2024

CHRISTIE'S PRESENTS

20TH CENTURY EVENING SALE

NEW YORK | MAY 16



Andy Warhol's Masterwork from a Private Collection
ANDY WARHOL (1928-1987)

Flowers

acrylic, fluorescent paint and silkscreen ink on linen
Executed in 1964.

Estimate: \$20,000,000-30,000,000



Property from a Distinguished Collection
PABLO PICASSO (1881-1973)

Femme au chapeau assise

oil and Ripolin on canvas

Painted in Mougins on 28 July 1971.

Estimate: \$20,000,000-30,000,000

NEW YORK– Christie's is pleased to announce the 20th Century Evening Sale, on Thursday, May 16, 2024 at 7PM live in Christie's Rockefeller Center saleroom in the heart of New York City. Taking place during the Spring Marquee Week, this sale celebrates the most significant artistic movements throughout the entirety of the twentieth century, through the Impressionist, Modern, and Post-War eras. The sale features an array of spectacular highlights that represent a range of groundbreaking artists across genres and mediums, including Andy Warhol, Pablo Picasso, Alberto Giacometti, Georgia O'Keeffe, David Hockney, Rene Magritte, and more.

The top lot of the sale is Vincent Van Gogh's *Coin de jardin avec papillons*, a luminous depiction of a flower bed in the public gardens at Asnières, a suburban town on the Seine to the northwest of Paris (estimate: \$28,000,000– 35,000,000). Additional leading highlights include Andy Warhol's *Flowers*,

the only 82-inch *'Flowers'* where all four flowers are painted in Day Glo paint and one of just three *'Flowers'* in the 82-inch square scale included in the landmark Leo Castelli 1964 exhibition, and *Femme au chapeau assise*, an exemplary portrait by Pablo Picasso painted in 1971, demonstrative of the iconic artist's enduring vitality. Both works are estimated to realize \$20,000,000 – 30,000,000.

The sale also features five exquisite examples by Impressionist master Claude Monet, including the rare and exceptional *Moulin de Limetz* from The Nelson-Atkins Museum of Art and the Heirs of Ethel B. Atha. Christie's is particularly honored to offer these works as we commemorate the 150th anniversary of the first Impressionist exhibition.

Across the sale are a number of exceptional collections, including The Collection of Norman & Lyn Lear, Property from the Collection of Mary & John Pappajohn, Surrealist Dream: The Shirley Ann and Frank Wozencraft Collection, the Collection of Fritz and Lucy Jewett, Vital Line: A New York Collection, and Property from the Collection of the Viennese Cabaret And Film Star Fritz Grünbaum. In total, across the 64 exemplary lots, the sale is estimated to achieve \$340 million – 500 million.

The full selection of works on offer in the sale will be on view at Christie's New York in an exhibition free and open to the public beginning May 4, 2024 until May 16, 2024.

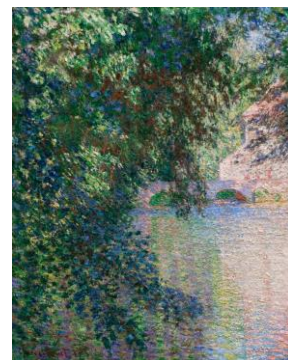
Christie's 20th Century Evening Sale | Select Highlights



Property from an Important Private Collection
ALBERTO GIACOMETTI (1901-1966)
Femme Leoni
bronze with brown patina
Conceived in 1947; this bronze version cast in 1958.
Estimate: \$20,000,000-30,000,000



Property from a Distinguished Private Collection
VINCENT VAN GOGH (1853-1890)
Coin de jardin avec papillons
oil on canvas
Painted in May-July 1887.
Estimate: \$28,000,000-35,000,000



Property from The Nelson-Atkins Museum of Art and the Heirs of Ethel B. Atha, Sold in Part to Benefit the Museum's Future Art Acquisitions
CLAUDE MONET (1840-1926)
Moulin de Limetz
oil on canvas
Painted in 1888.
Estimate: \$18,000,000 – 25,000,000

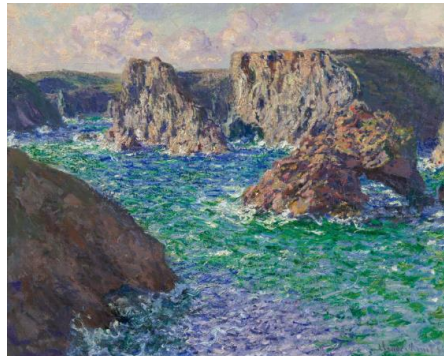


Property from a Distinguished American Collection
Collection
GEORGIA O'KEEFE (1887-1986)
Red Poppy
oil on canvas
Painted in 1928.
Estimate: \$10,000,000-15,000,000



The Collection of Norman & Lyn Lear
DAVID HOCKNEY (B. 1937)
A Lawn Being Sprinkled
acrylic on canvas
Painted in 1967.
Estimate: \$25,000,000-35,000,000

Vital Line: A New York Collection
FRANZ KLINE (1910-1962)
Washington Wall
oil on canvas
Painted in 1959.
Estimate: \$10,000,000-15,000,000



Property from the Collection of Fritz and Lucy Jewett
CLAUDE MONET (1840-1926)
La Roche Guibel, Port-Domois
oil on canvas
Painted in 1886.
Estimate: \$6,000,000-8,000,000

Property from the Collection of Mary & John Pappajohn
JASPER JOHNS (B. 1930)
0 through 9
Sculp-metal and collage on canvas with Sculp-metal on wood frame
Executed in 1961.
Estimate: \$5,000,000-7,000,000



Surrealist Dream: The Shirley Ann and Frank Wozencraft Collection
RENE MAGRITTE (1898-1967)
Les eaux profondes
oil on canvas
Painted in 1941.
Estimate: \$4,000,000-7,000,000

PRESS CONTACT:

Christie's: Jessica Stanley | jstanley@christies.com

About Christie's

Founded in 1766, Christie's is a world-leading art and luxury business with a physical presence in 46 countries throughout the Americas, Europe, Middle East, and Asia Pacific, and flagship [international sales hubs](#) in New York, London, Hong Kong, Paris and Geneva. Renowned and trusted for our expert live and online-only auctions, as well as bespoke [Private Sales](#), Christie's unparalleled network of specialists offers our clients a full portfolio of [global services](#), including art appraisal, art financing, international real estate and education. Christie's [auctions](#) span more than [80 art and luxury categories](#), at price points ranging from \$500 to over \$100 million. Christie's has sold 7 of the 10 most important single-owner collections in history, achieved the world record price for an artwork at auction, launched the first [fully on-chain auction platform](#) dedicated to exceptional NFT art and manages an [investment fund](#) to support innovative startups in the art market. Christie's is also committed to advancing [responsible culture](#) throughout its business and communities worldwide. To [learn more](#), browse, bid, [discover](#), and join us for the best of art and luxury at [christies.com](#) or by downloading Christie's apps.

* Please note when quoting estimates above that other fees will apply in addition to the hammer price - see Section D of the Conditions of Sale at the back of the sale catalogue.
*Estimates do not include buyer's premium. Sales totals are hammer price plus buyer's premium.

###

FOLLOW CHRISTIE'S ON

