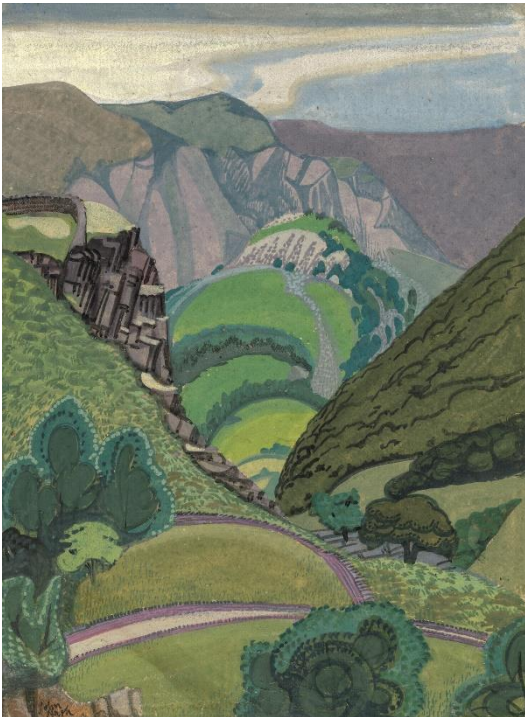


CHRISTIE'S

MEDIA ALERT | LONDON | 15 FEBRUARY 2022

DRAMAS OF LIGHT AND LAND: THE MARTYN GREGORY COLLECTION OF BRITISH ART

Online, from 10 to 24 March



John Nash R.A. (1893-1977)
Hilly Landscape
Estimate: £3,000-5,000

London – Travel across Scotland, Wales, England, France and Italy in Christie's *Dramas of Light and Land: The Martyn Gregory Collection of British Art* online, from 10 to 24 March. A remarkable survey of British art, the collection predominantly comprises works on paper, from the 18th, 19th and 20th centuries. Martyn Gregory, a renowned St James's dealer of British Drawings and Historical Pictures relating to China, India and South East Asia, is offering these British works as part of scaling back his business, having recently entered his 80th year.

A true connoisseur collector-dealer, Martyn's notable eye is well-known in the field, resulting in a collection which successfully spans centuries and movements to tell a broad and far-reaching story of the history of this section of British art. The strength and breadth of the collection, as well as the remarkable condition and presentation of the pictures, are testament to Martyn's skill and knowledge as a dealer and Specialist. Landscape is the dominant theme

throughout, including works by John Sell Cotman and both John and Paul Nash, portraiture, still-life and interiors are also represented. Featuring 198 lots, estimates range from £700 to £50,000.

The top lot of the sale is an imposing Daniel Gardner, *Portrait of the Drake Family* (estimate: £30,000-50,000). Further highlights include: Samuel Scott, *Rochester Castle, Kent, from the north-west* (estimate: £15,000-25,000); John Sell Cotman, *A ruined Roman aqueduct* (estimate: £15,000-20,000); David Cox, *The Promenade at Aberystwyth* (estimate: £15,000-20,000); William Turner of Oxford, *Dawn, Loch Torridon* (estimate: £15,000-20,000); Peter De Wint, *A Summer landscape* (estimate: £15,000-20,000); Edward Dodwell, *The Phlegraeon Fields* (estimate: £12,000-18,000); Thomas Girtin, *A Watermill* (estimate: £12,000-18,000); George Fennel Robson, *Scene on the Isle of Skye* (estimate: £10,000-15,000); John Varley, *Cader Idris* (estimate: £8,000-12,000); Richard Parkes Bonington, *The ruins of Chateau d'Harcourt, near Lillebonne* (estimate: £6,000-8,000).

Annabel Kishor, Head of Sale, British Drawings, Christie's London: *"We are delighted to be offering the Martyn Gregory collection. It is a really exceptional survey of British watercolour painting from the 18th to 20th Centuries, including many of the great names of the Golden Age. Martyn's connoisseurial eye is evident throughout, as is his attention to detail in choosing examples in fantastic condition, and presenting them beautifully. Much of the collection has not been exhibited or on the market since the 1970s or 1980s, and so it has been a pleasure to 're-discover' these works."*

Martyn Gregory: *"I first began my art dealing career 57 years ago. With gallery premises off New Bond Street, then on Albemarle Street and for the last 44 years on Bury Street, St James's, I have specialised predominantly in English watercolours and drawings. As I am entering my 80th year I shall be scaling back and will no longer deal in British drawings, instead concentrating on the other side of our business: historical and topographical pictures relating to China, India and South East Asia by both travelling Western and Eastern artists. Our love of early British drawings remains undiminished."*

To find out more and view the full sale when it goes live: please click [here](#)

PRESS CONTACTS:

Hannah Schweiger | +44 (0) 207 389 2964 | hschweiger@christies.com

About Christie's

Founded in 1766, Christie's is a world-leading art and luxury business. Renowned and trusted for its expert live and online auctions, as well as its bespoke private sales, Christie's offers a full portfolio of [global services](#) to its clients, including art appraisal, art financing, international real estate and education. Christie's has a physical presence in 46 countries, throughout the Americas, Europe, Middle East, and Asia Pacific, with flagship [international sales hubs](#) in New York, London, Hong Kong, Paris and Geneva. It also is the only international auction house authorized to hold sales in mainland China (Shanghai).

Christie's [auctions](#) span more than [80 art and luxury categories](#), at price points ranging from \$200 to over \$100 million. In recent years, Christie's has achieved the world record price for an artwork at auction (Leonardo da Vinci's *Salvador Mundi*, 2017), for a single collection sale (the Collection of Peggy and David Rockefeller, 2018), and for a work by a living artist (Jeff Koons' *Rabbit*, 2019).

Christie's [Private Sales](#) offers a seamless service for buying and selling art, jewellery and watches outside of the auction calendar, working exclusively with Christie's specialists at a client's individual pace.

Recent innovations at Christie's include the groundbreaking sale of the first NFT for a digital work of art ever offered at a major auction house (Beeple's *Everydays*, March 2021), with the unprecedented acceptance of cryptocurrency as a means of payment. As an industry leader in digital innovation, Christie's also continues to pioneer new technologies that are redefining the business of art, including the creation of viewing and bidding experiences that integrate augmented reality, global livestreaming, buy-now channels, and hybrid sales formats.

Christie's is dedicated to advancing [responsible culture](#) throughout its business and communities worldwide, including achieving sustainability through net zero carbon emissions by 2030, and actively using its platform in the art world to amplify under-represented voices and support positive change.

Browse, bid, [discover](#), and join us for the best of art and luxury at: www.christies.com or by downloading Christie's apps. The COVID-related re-opening status of our global locations is available [here](#)

*Please note when quoting estimates above that other fees will apply in addition to the hammer price - see Section D of the Conditions of Sale at the back of the sale catalogue.

*Estimates do not include buyer's premium. Sales totals are hammer price plus buyer's premium and are reported net of applicable fees.

###

Images available on request

FOLLOW CHRISTIE'S ON:

